

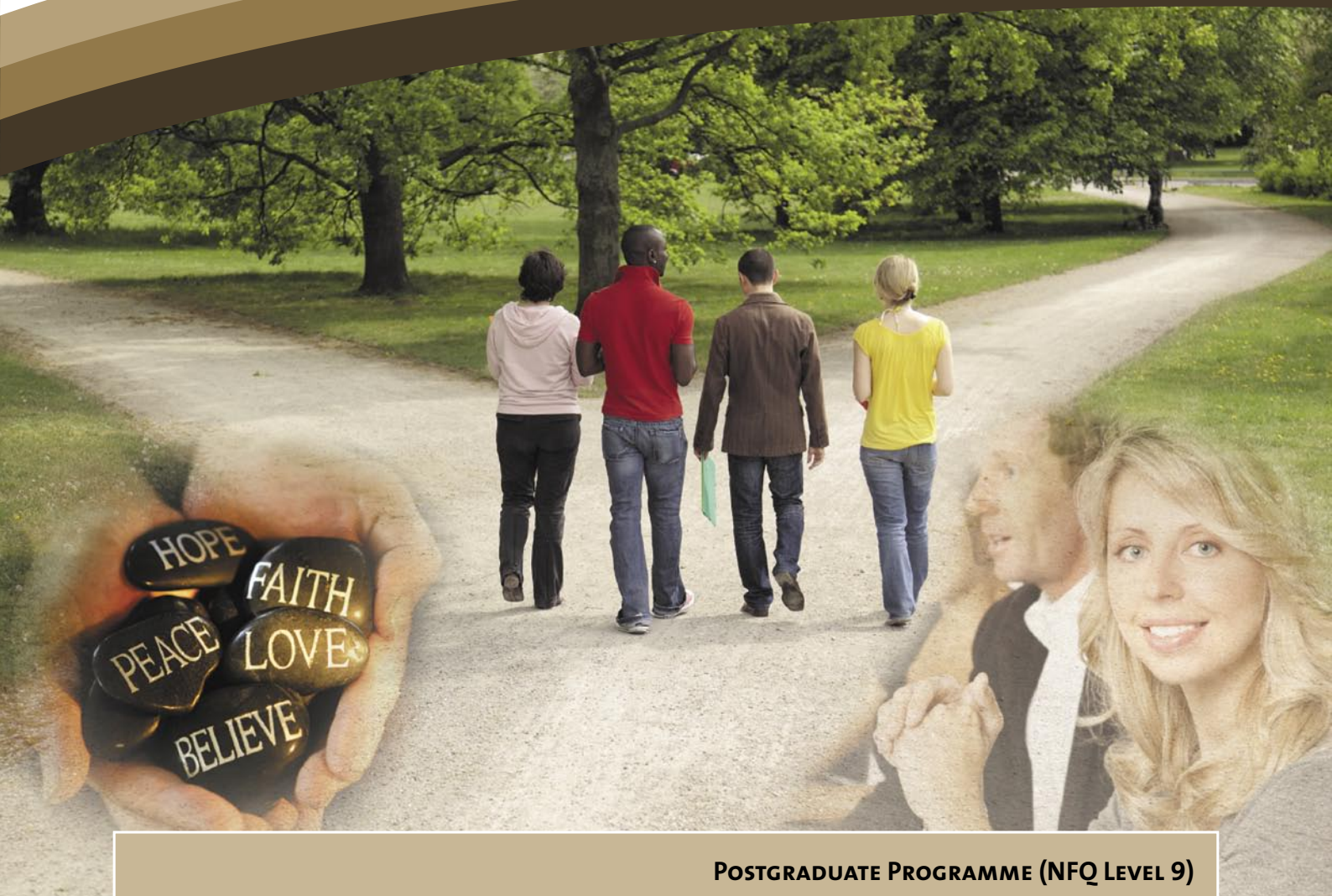


www.materdei.ie

2 Year Part-time

1 Evening per Week and 8 Saturdays

Starts September 2011



POSTGRADUATE PROGRAMME (NFQ LEVEL 9)

MA in Chaplaincy Studies and Pastoral Work



Mater Dei Institute of Education is a College
of Dublin City University

Mater Dei Institute of Education

Chaplaincy Studies and Pastoral Work at MDI

The MA in Chaplaincy Studies and Pastoral Work programme provides the academic, pastoral, spiritual, personal and professional education for those engaged in pastoral work and chaplaincy.

The MA in Chaplaincy Studies and Pastoral Work programme provides the academic, pastoral, spiritual, personal and professional education for chaplains, coordinators of chaplaincy services or those engaged in pastoral work in their community and in a broad range of contexts.

Upon successful completion of this programme the graduate will be able to:

- Understand, and be able to apply knowledge from theological, educational and psychological disciplines to the work of Chaplaincy and Pastoral Work.
- Have a specialist knowledge and contextual awareness in areas of liturgy and prayer, community building, faith development and social justice with particular reference to a pastoral context (school / Prison / third level institute / parish / youth work).
- Engage sensitively in faith formation and faith development initiatives in an invitational and inclusive manner.
- Exhibit competence as a reflective practitioner and openness to continuing professional and personal development.
- Demonstrate the ability to manage their own work as a Chaplain / Pastoral Worker and to integrate this with the work of others in order to provide an effective Chaplaincy service in a pastoral setting.



STUDENT VOICE

"My placement is in a prison, the programme enables me to integrate theory and practice and enhances my sense of confidence in responding to the needs of prison ministry."

PEADAR O'KELLY, POSTGRADUATE STUDENT 2010/2011



Who is this MA for?

The programme is designed for chaplains, coordinators of chaplaincy services or those engaged in pastoral work in a broad range of contexts including:

- Primary Schools
- Post-Primary Schools
- Third Level Institutes
- Prisons / Young Offenders
- Parish Communities
- Youth and Young Adult Groups
- Community / Voluntary Sector

The programme provides Professional Development for those already working or wishing to work in the above contexts who seek to enrich their skills in the areas of Faith Development, Chaplaincy and Chaplaincy Coordination.

"The programme integrates theology, education & psychology in a practical way".

KEN MAHER, ST. KIERAN'S COLLEGE KILKENNY, GRADUATE 2009.

The Student Experience

The learning experience takes place both in MDI and on the chaplaincy placement. Each context informs and critiques the other. Writing from her perspective as a pastoral worker in a parish context, Aoife describes the learning experience:

“The classroom learning experience enables postgraduate students to grow personally and professionally in a friendly and supportive environment. Students are encouraged to be more culturally aware, to be innovative in planning activities and liturgies, and to reflect personally and theologically on our ministry. The forum provides for sharing our experiences of ministry with other students. The learning experience is integrated and therefore helps enrich my parish placement”.

DR AOIFE MCGRATH, POSTGRADUATE STUDENT 2010/11

Flexible Scheduling

This Chaplaincy course is offered on a part-time basis (over two years). Classes take place on Monday evenings and on eight Saturdays throughout the academic year.

Modules

Participants who wish to obtain a Master’s Award must take the academic and professional taught modules below.

In addition, participants will complete a Research Module (30 ECTS credits) which will include a series of seminars on research methodologies and a minor thesis on a topic of professional relevance.

Ongoing Professional Development and Placement

The Professional Development module includes an on-going placement as a student chaplain / pastoral worker either in a primary school, post-primary school, a prison, a third level institute, a parish community or a youth / young adult group.

The placement should be 2-4 hours per week and must be arranged prior to Admission to the programme.

Further details are available from the Admissions Office.

Modules				
The Theology of Ministry	Cultural Discernment and Pastoral Work	Spirituality and Ritual in Context	Foundations in the Theory and Practice of Spiritual Accompaniment, Counselling Skills and Pastoral Skills	Personal and Professional Development and Supervision (2 Modules)

Awards Available

The MA in Chaplaincy Studies and Pastoral Work is awarded by Dublin City University (Level 9 of the National Framework of Qualifications).

Participants who do not wish to complete an entire MA may exit the programme with a **Graduate Diploma** (after successfully completing 60 credits of taught modules).

Entry Requirements

The general criteria for entry to this taught postgraduate programme is a good honours primary degree or equivalent.

Applicants must be successful at a pre-admission interview.

There is a minimum age requirement of 23 years in the year of application.

Applicants must have completed a minimum of sixty ECTS credits in the area of foundational Theology or equivalent.

Applicants must have secured a suitable placement.

Students who do not meet the normal criteria may be considered for a place on the programme on the basis of their work experience and other relevant educational achievements.

Applicants seeking Accreditation of Prior (Certified) Learning (APL) for the purposes of entry, module exemptions, or advanced entry, or applicants seeking Accreditation of Prior Experiential Learning (APEL) for the purposes of entry or module exemptions will also be considered.

Cost

For 2011 entry fees please visit www.materdei.ie

How do I apply?

Application forms are available by contacting:

Admissions Office

Mater Dei Institute of Education
Clonliffe Road
Dublin 3

Telephone: (01) 808 6518

Email: admissions@materdei.dcu.ie

Apply early to secure a place on the programme.
The closing date for applications is 31st May 2011.

Want to find out more?

If you want to find out more about the programme please contact our Admissions Office.

Alternatively, contact the Programme Coordinator:

Dr PJ Sexton

Telephone: (01) 808 6572

Email: pj.sexton@materdei.dcu.ie

POSTGRADUATE DEGREE

"A postgraduate degree in MDI provides an opportunity for advanced study in a particular field of research in the context of a vibrant and growing research community. Staff of the Institute work closely with graduate students and offer assistance in matters pertaining to research, funding and careers.

For information on the research specializations of academics, please go directly to individual staff profiles. I look forward to welcoming you to the College."

DR GABRIEL FLYNN, HEAD OF GRADUATE STUDIES

OTHER TAUGHT MA PROGRAMMES AVAILABLE (NFQ LEVEL 9)

- MA in Ethics (Joint Programme with DCU)
- MA in Poetry Studies
- MA in Religion and Education Post-Primary
- Masters in Religious Education Primary (Joint Programme with SPD)
- MA in Theology

MASTERS BY RESEARCH / PHD (NFQ LEVEL 9 & 10)

Research degree programmes in the areas of:
Education, English, Ethics, History, Irish Studies, Music, Philosophy, Religious Education, Theology

Brochures are available online and from the Admissions Office.